



Ryerson Student Learning Centre

A place of
Interaction,
Inspiration,
Innovation,
and Discovery

Madeleine Lefebvre,
Chief Librarian
Ryerson University,

November 2015

The Context: Ryerson University



- Once a polytechnic, now a large comprehensive university
- In the heart of downtown Toronto
- Almost 40,000 undergraduate and graduate students
- over 100 programs
- 440 PhD students



Our Momentum

In two decades, Ryerson has transformed into a comprehensive university with an array of undergraduate, master's and doctoral programs and diverse scholarly, research and creative (SRC) activities.

Our Time to Lead builds upon Ryerson's proud traditions and its position as a leading post-secondary institution. It expands the university's strengths for relevant programs and SRC activities, its engaging and diverse learning and teaching environment that integrates theory with practice, and strong relationships with external communities.

845

Tenure & Tenure-Track Faculty

The Digital Media Zone is one of the world's

100+

undergraduate, master's & PhD programs

top ranked

university-based incubators

Award-winning Maple Leaf Gardens restoration

40,000
Students

Named Canada's First

"Changemaker Campus"

by the Ashoka Foundation for Leadership in Social Innovation

Two-thirds of undergraduates

enrolled in professionally-accredited programs

First Choice

for more undergraduate applicants than any other Ontario university relative to available spaces

Partnerships with more than

130

institutions in

34

countries

2x

Total research funding doubled between 2008 & 2013

6

applications for every available graduate space

10+%

of student population actively engaged in entrepreneurial-focused learning and activities

Home of world renowned Black Star Collection of

320,000
photographs

140,000
alumni worldwide

Ranked 5th

in sponsored research among Ontario non-medical/doctoral universities (2012/13)

100+

labs, institutes and research centres

Home to Canada's largest continuing education provider, The G. Raymond Chang School of Continuing Education

94%

undergraduates have an experiential learning component

Our Priorities

We will pursue our vision to be Canada's leading comprehensive innovation university by focusing on four interconnected priorities over the next five years.

A set of 29 strategies support our priorities. This gives ample opportunity for the university's faculties, schools, departments and administrative units to interpret and activate the plan locally.



① Enable Greater Student Engagement & Success through Exceptional Experiences

Students are our top priority and are attracted by high-quality programs and learning opportunities that extend beyond the classroom. We will provide all students with exceptional experiences and opportunities – inside and outside their programs and classes, locally and globally – to prepare them with the necessary skills to build thriving careers in today's knowledge economy.



② Increase SRC Excellence, Intensity & Impact

Excellence in scholarly, research and creative (SRC) activity has been fundamental to Ryerson's evolution as a comprehensive innovation university. We will continue to build a collaborative, interdisciplinary culture that fosters inquiry, discovery, knowledge and creative works. We aspire to become one of Canada's top 10 non-medical research universities in terms of research funding, and a leader in applied SRC in collaboration with community, industry and government partners.



③ Foster an Innovation Ecosystem

We will nurture an environment that instills creative and entrepreneurial thinking across disciplines, and supports more students, faculty and staff to become innovators who can make a positive difference. Innovation to us includes civic, cultural and social innovations that enrich the fabric of society and improve quality of life, as well as innovations that create new jobs and drive change.



④ Expand Community Engagement & City Building

Community engagement is a hallmark of our approach to programs, experiential learning, and SRC activities. We will strengthen engagement in ways that move the university and the city forward together. We will expand external connections to create greater opportunities for academic and research interaction and collaboration, student engagement, and international reach and influence.

Historical context

RYERSON UNIVERSITY MASTER PLAN

MARCH 2008



1. Commitment to Design Excellence
2. Density: Urban intensification
3. People First: Pedestrianization of the urban environment

(www.ryerson.ca/about/masterplan/)

Student Learning Centre:

- Create a gateway and window to Ryerson on Yonge Street
- Address the critical need for study space and collaborative learning spaces

Before – “Behind Sam the Record Man”



The Library

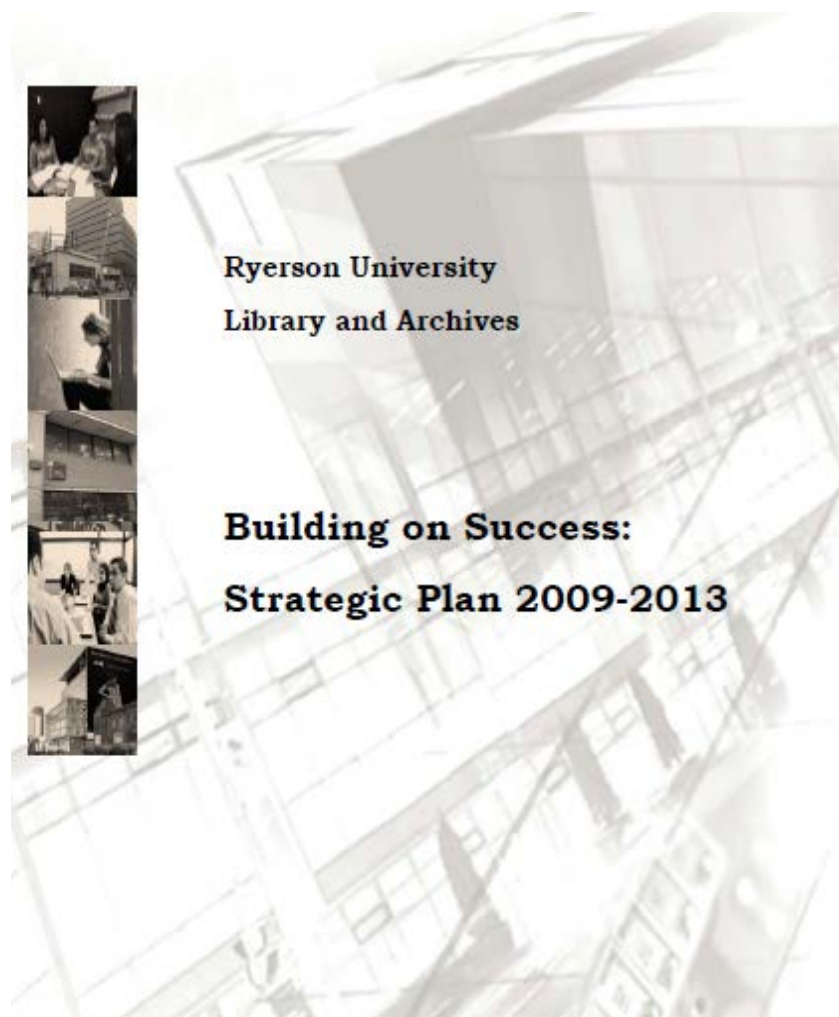


- Built in 1974 for 9,000 students
- Brutalist architecture
- Good environment for books, not users
- Over 11,000 visits per day at busiest times
- Strong user dissatisfaction reflected in Library as Place LibQUAL+ scores

Translating university goals into library goals

- Our library values
- Our strengths in developing innovative technology and services
- Our dedication to providing experiential learning opportunities for students
- Our partnerships with faculty and others
- Our central, universal role for all students and faculty, regardless of program or level
- Our can do attitude

The Library's Vision for the SLC



No books, but ubiquitous access to digital resources

Mobile learning/laptop loan program

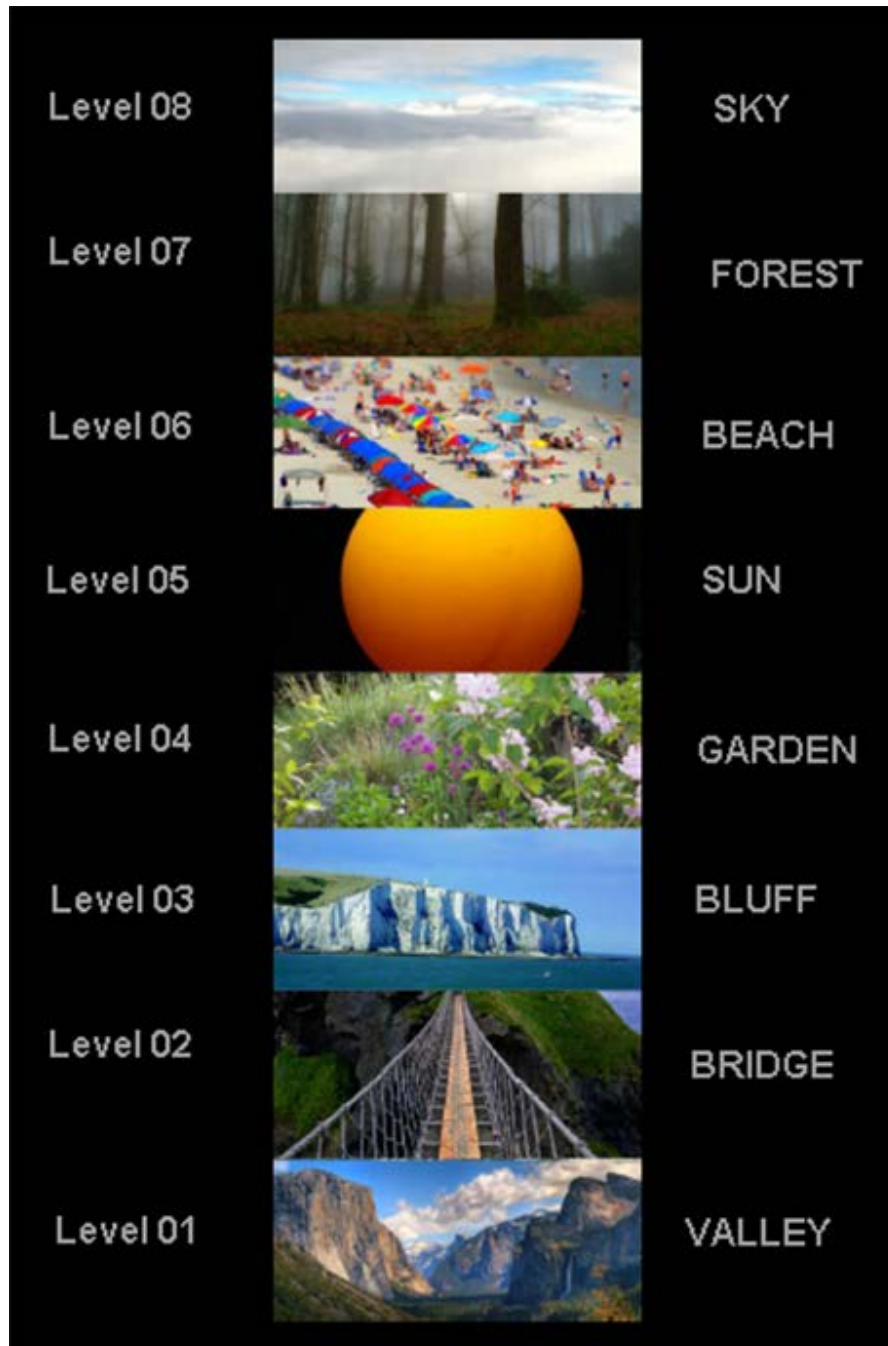
Collaborative services and learning spaces, barrier free

Seminar/teaching space

Versatile and congenial space

Sensory stimulation

A place of interaction, inspiration, innovation and discovery



Design

Snøhetta
(Oslo & New York)

www.snohetta.com

Zeidler Partnership
(Toronto)

www.zeidlerpartnership.com

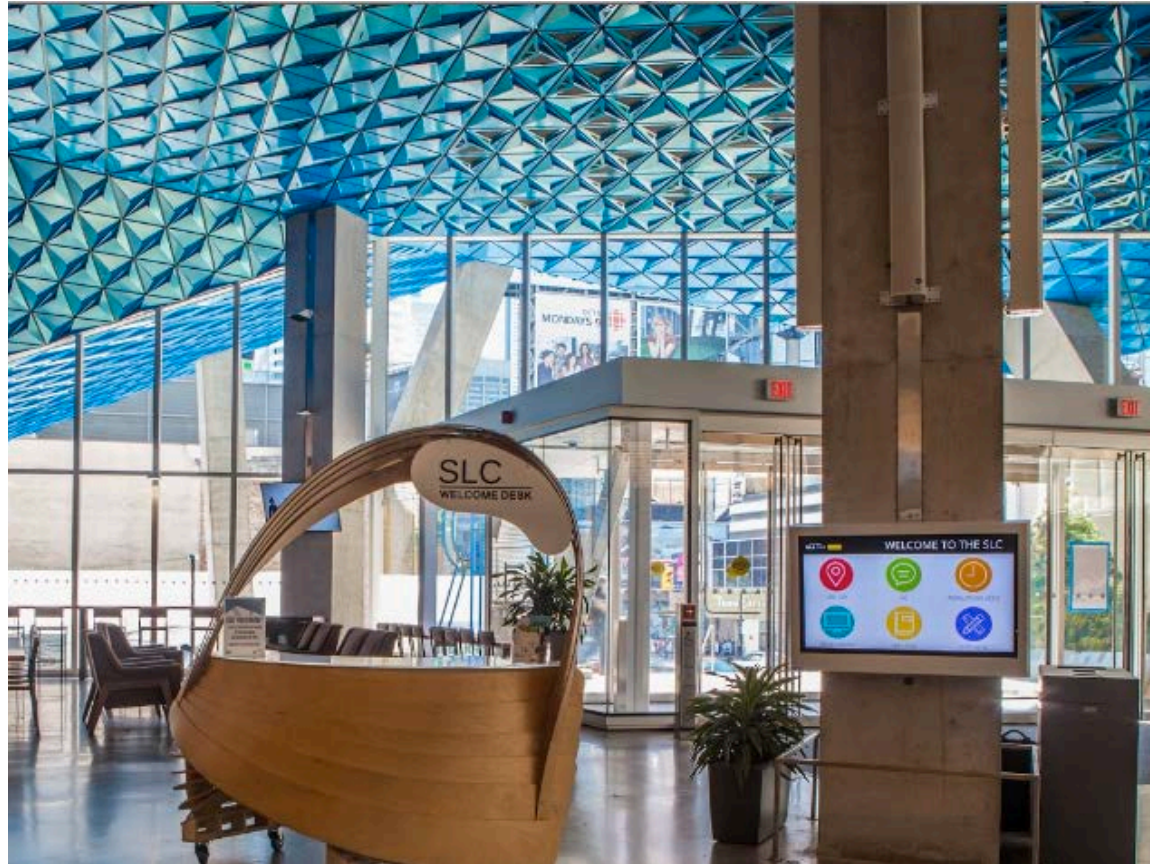


Photo: Rebecca Graham



Ryerson University Student Learning Centre 2015
<http://www.azuremagazine.com/article/snohetta-ryerson-toronto-san-fransisco-oslo-new-york>





Entrance and student designed welcome desk



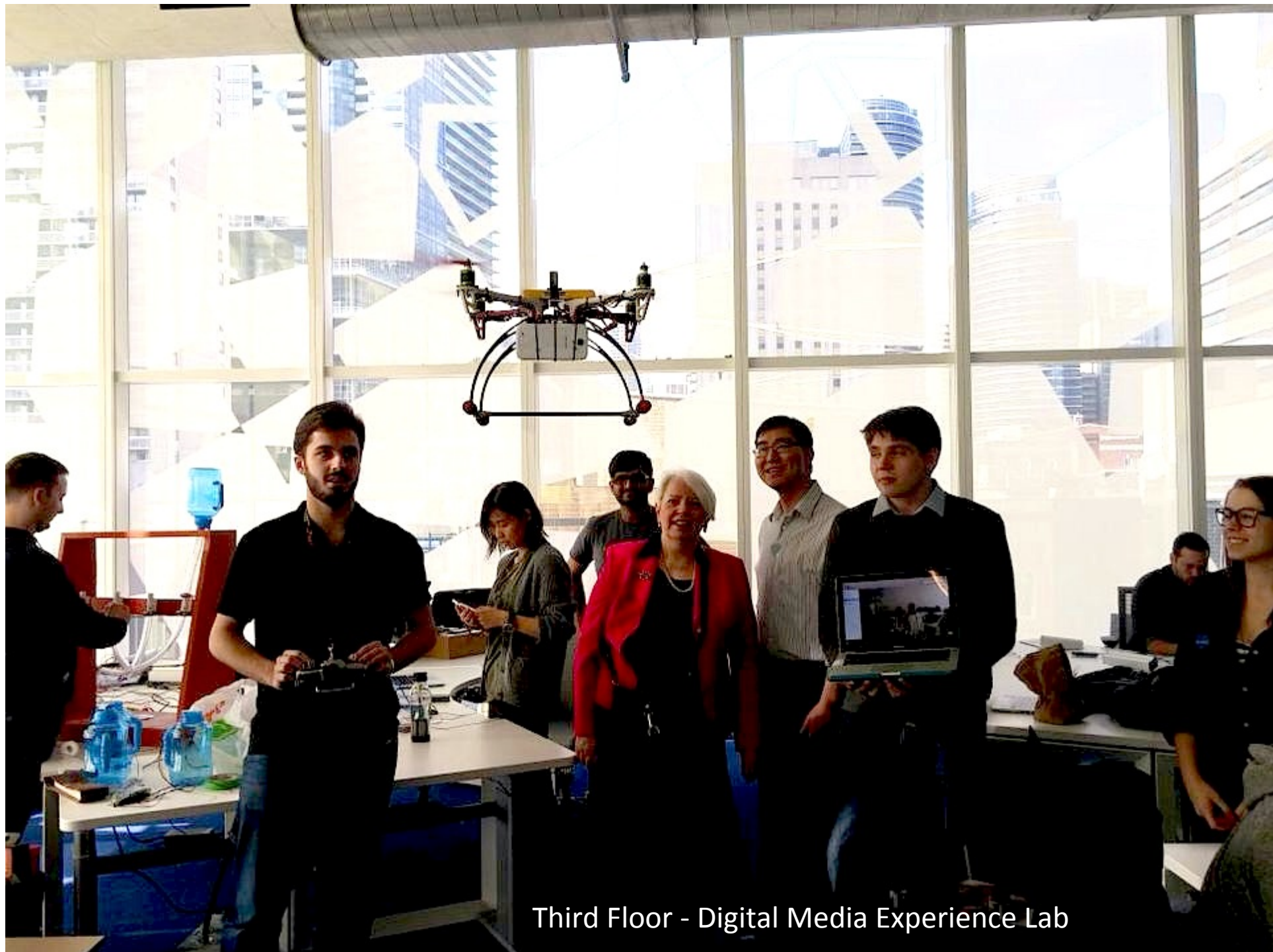
Café and staircase to Library connector



Second floor – the Bridge



<https://www.flickr.com/photos/skylinemarc/16020243533/in/photostream/>



Third Floor - Digital Media Experience Lab



The Launch Zone is next to the Digital Media Experience Lab



Student Learning Support



Fifth Floor - seminar and collaborative workrooms



The Beach



Seventh floor – silent and quiet study



Eighth floor – The Sky

What is zone learning?

Zone learning transforms your educational experience at Ryerson. It takes you beyond the classroom and lets you meet and work with students from across the university who are creative, ambitious, and driven by passion. By becoming part of Ryerson's zone learning network, you'll get the right kind of support to create, develop, and launch your idea.

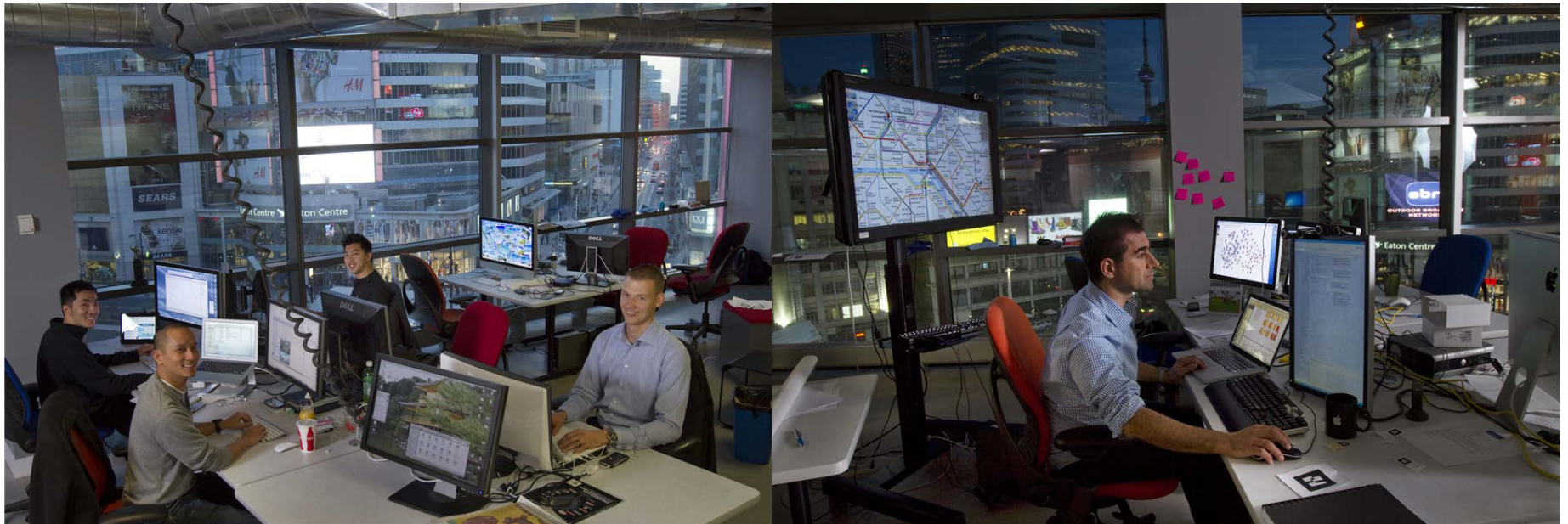
Are you zone-ready?

Are you ready to take your idea to the next level? Not sure where to start or if zone learning is for you?

[Find out more](#) >



The Digital Media Zone (DMZ)



Library – www.soapboxhq.com

www.digitalmediazone.ryerson.ca

Each of Ryerson's multidisciplinary zones can help you take your idea to the next level.

DMZ



Centre for Urban Energy



Fashion Zone



Design Fabrication Zone



Transmedia Zone



SocialVentures Zone



Launch Zone



Legal Innovation Zone



Biomedical Zone



DIGITAL MEDIA EXPERIENCE LAB

The Library's DME Lab is a Makerspace, a Fabrication Lab, a Digital Media Prod. facility, a Technology lender and part of Ryerson University's Library and Archives! So...
If you have a library card, you're in!

For Students...

Not sure where to start? We offer one-on-one tutorials to teach you to use emerging tech and Digital Media, including Virtual Reality, 3D Printing and Photoshop / Illustrator
Supercharge your learning experience, book a 1 hour session now.

For Faculty...

The DME is here to augment and support your curriculum.
We offer workshops in emerging technology and Digital Media Production techniques for the classroom. Contact us to book a time.



Creating an Inclusive DIY & LIT
(Learn-It-Together) Space

Universal welcome, in support
of the University's commitment
to equity, diversity and
inclusion

Advice from Ryerson Experts

- To be inclusive
- Not only for show (Support Curriculum)
- Open to all students
- Share knowledge - LIT (Learn-It-Together) Space
- Help students become real creators - DIY
- Explore knowledge in unexpected ways
- Application of innovation
- Not a service but a space for experiential learning
- More about people than technology

Multimedia Technology & Bookable Equipment



Peer Tutoring & Support



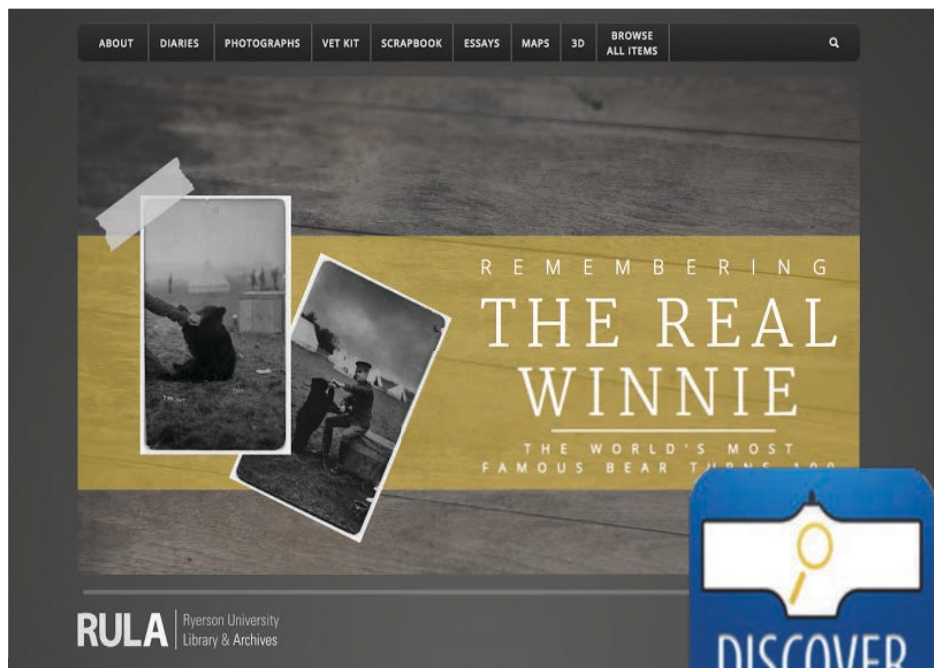
Hands-On Workshops & Guest Lectures



LIVEbrary: Exploration & Experimentation



Support Innovation in Pedagogy & Curriculum



Other SLC Collaborations

Long Night Against Procrastination (LNAP)

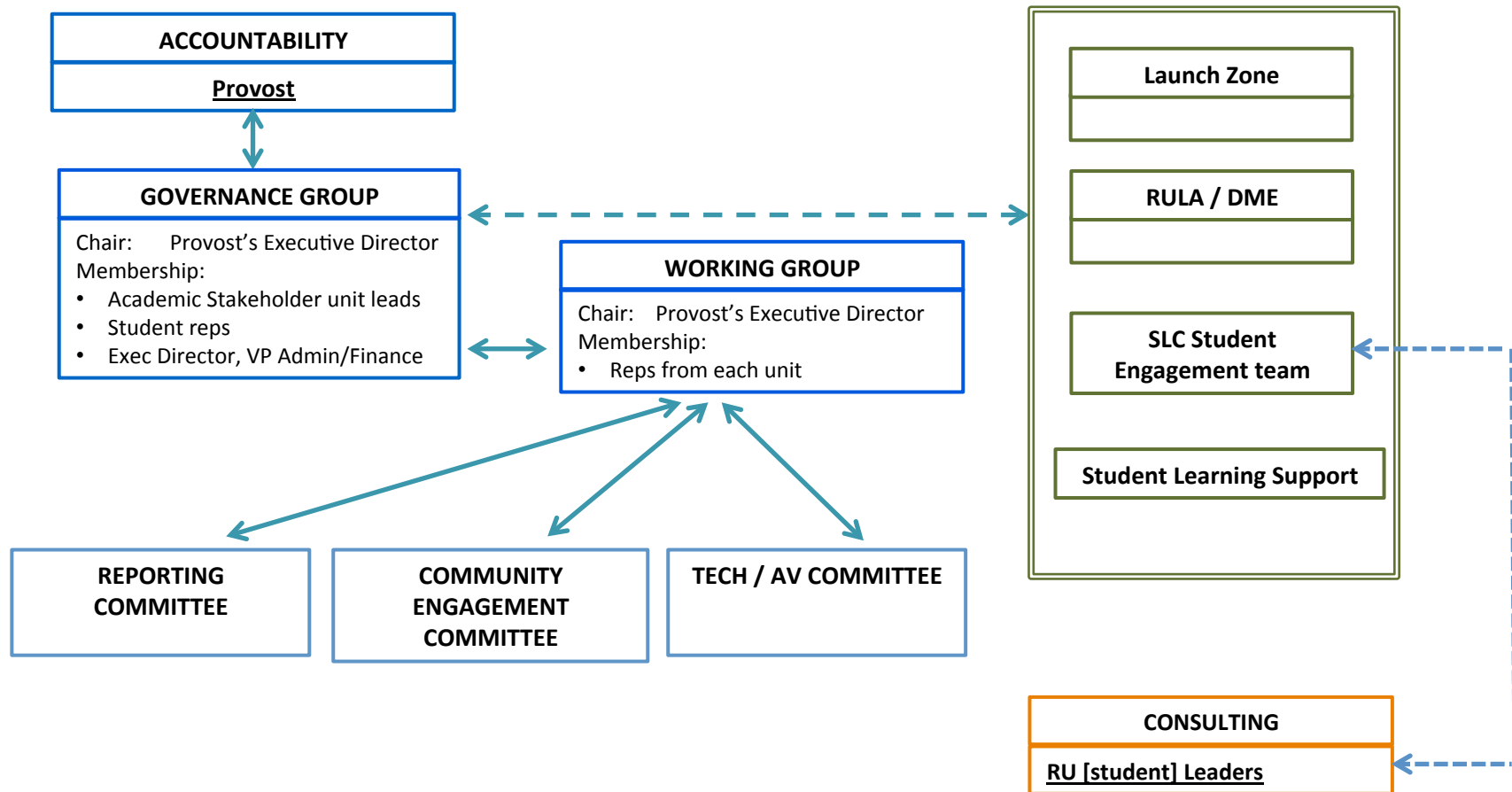
Collaboration between Student Learning Support and Library Learning Services

A nation-wide "study blitz" event that provides supported study space to students all-night long, helping them work through their assignments late into the night.

Students can:

- get help with essays and academic papers
- receive graduate thesis coaching
- plan for tests and exams
- get drop-in math tutoring
- get help with research and citation assistance
- de-stress with yoga and meditation
- try 3D printing and media tech experimentation in the Digital Media Experience Lab
- event ran from 5PM to 1AM
- get food and refreshments

SLC STAKEHOLDERS & GROUPS



SLC GOVERNANCE & WORKING GROUPS

SLC GOVERNANCE GROUP

Chair: Executive Director Office of the Provost

Membership:

- Student reps
- Chief Librarian
- Director of Launch Zone
- Director of Student Learning Support
- Strategic Projects Liaison [Student Engagement]
- Facility Supervisor SLSC & LIB
- Executive Director, VP Administration and Finance

Meeting frequency: Twice per term (or as needed)

SLC WORKING GROUP

Chair: Executive Director, Office of the Provost

Membership:

- Student reps
- RULA – Associate Chief Librarian
- RULA – Head of Borrowing & Lending Services
- RULA – Head of LITS
- DME – Co-ordinator
- Operations rep from Launch Zone
- Assistant Director of Student Learning Support
- Strategic Projects Liaison (Student Engagement)
- Facility Supervisor SLS & LIB
- SLC Building Officers
- + Committee members as needed

Meeting frequency: Every 2 weeks to start

For all topics: Invite members from non-academic stakeholder groups as needed

Question: Who owns study space? No one questions it when it's within a Library. But what about a "library for the 21st Century" with multiple stakeholders?

The Best Laid Plans... *(Robert Burns)*

“All buildings are predictions. All predictions are wrong...but it is possible to design buildings so that it doesn't matter if you are wrong.”

-Stewart Brand, MIT Media Lab

- Below grade retail space didn't attract a tenant
 - now being repurposed as a temporary home for the Ryerson Theatre School
- Retail frontage at street level didn't attract a tenant
 - now becoming a Thai fast food outlet
- We're still two doors away from a strip joint



Student Feedback

The SLC has a sense of welcome... Now I spend almost every day on campus...

The DME Lab staff have empowered me to do things that I never thought I could have done... [They] did not see me as a student to teach, but an individual they could learn from...

They encourage students to follow their curiosity, without fear of doing it 'wrong'... [They] break down those borders and empower students from every faculty to explore their ambitions. A business student can design his own fashion brand, if you give him the camera and photo editing software to market it. A Master's of Digital Media student can organize a gaming showcase, if you give her an atrium to do it in. An urban planning student can build a quadcopter, if you give her the tools to do so – yes, these are real people!

If you believe in them, they will believe in themselves. We learn more in that building than in any of our classes.

Marissa Frost, 3rd Year Creative Industries student

Faculty feedback

The SLC has become more than a “gateway” to the campus; it has emerged as the epitome of Ryerson University's new academic plan...

Thanks to the DME Lab, that I can contribute to colleagues’ research on the impacts of 3D printing on English poetry while gaining research partners for grants on gaming technologies in architectural design is a testament to the SLC team’s depth of support that goes beyond students. The innovations that we as faculty develop spur our students to take their own initiative to participate in this innovation ecosystem. ..

The DME staff introduced me to a group of Engineering students who designed a prototype for a drone safety system. I helped them refine their drone for aerial building construction oversight and 3D site scanning. They then worked with the Launch Zone to develop a business plan, while collaborating with an Architectural Science student and the Design Fabrication Zone to develop a market ready prototype. Coming full circle, [their work] has also begun an emerging stream in my research portfolio.

Vincent Hui, Associate Professor, Architectural Science

Favourite Photos

President Sheldon Levy,
Craig Dykers, Snøhetta
principal,
Cheerful Chief Librarian



The LITS team going boldly
into their new DME Lab

Thank you!
@MJLibrarian
mjlefebv@ryerson.ca